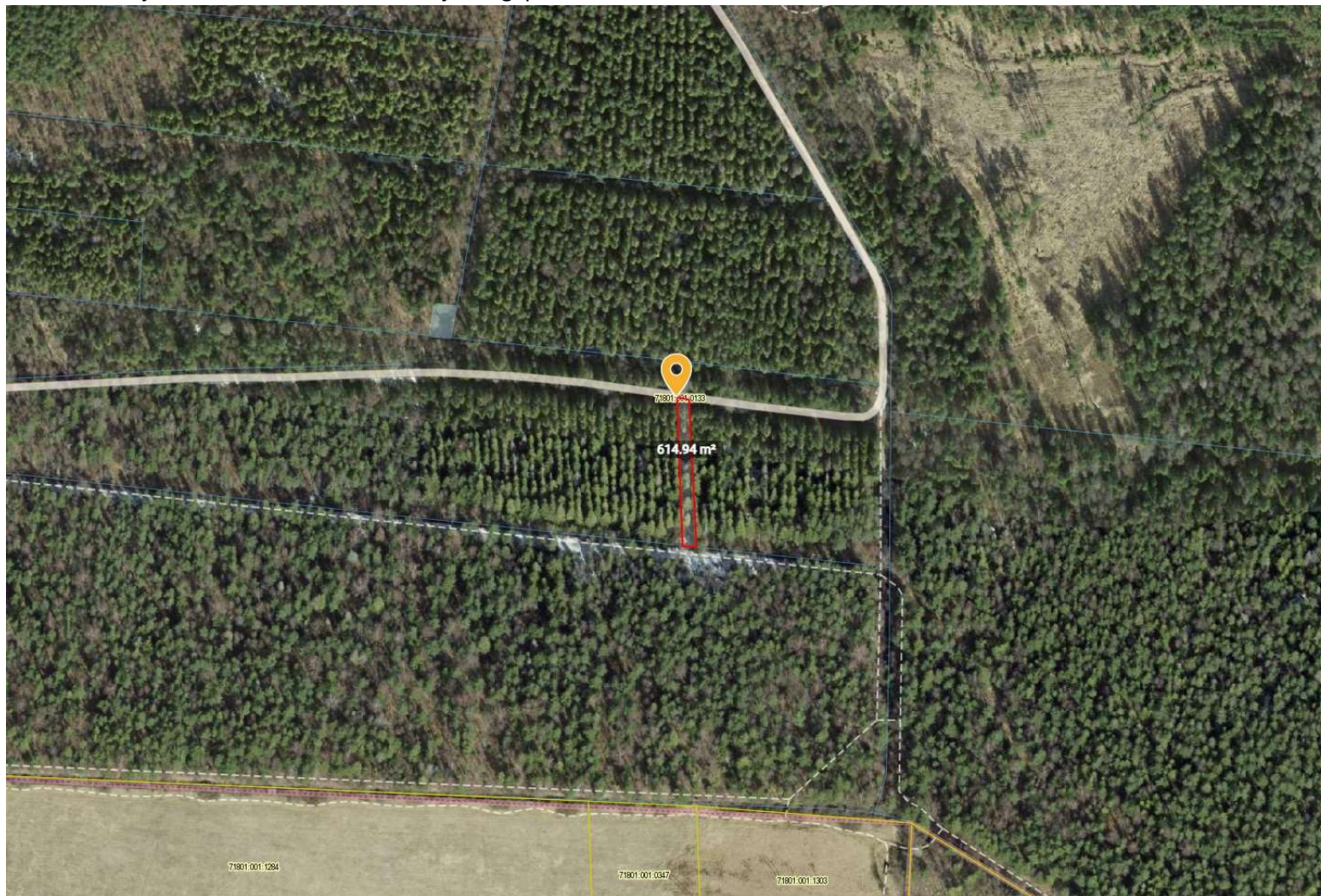


Lisa 1: Uue rajakoridori orienteeruv skeem ja nurgapunktide koordinaadid



XY: 6573560.92, 540190.05

XY: 6573643.90, 540186.10

XY: 6573644.75, 540179.40

XY: 6573560.41, 540182.62

BL: 59.298345, 24.705387

BL: 59.29909, 24.705333

BL: 59.299099, 24.705216

BL: 59.298341, 24.705257